

AXOR Citterio

3-hole basin mixer for concealed installation wall-mounted with spout 166 mm, cross handles and plate

Surfaces: **Chrome** Article Number: **39314000**



Description

product features

- consists of: 3-hole basin mixer for concealed installation wall-mounted, waste set
- projection 166 mm
- spray type: normal spray
- maximum flow rate at 3 bar: 5 l/min
- ceramic valves hot/ cold 180°
- suitable for continuous flow water heaters
- non-closing waste set
- connection type: basic set
- connection dimension: DN15

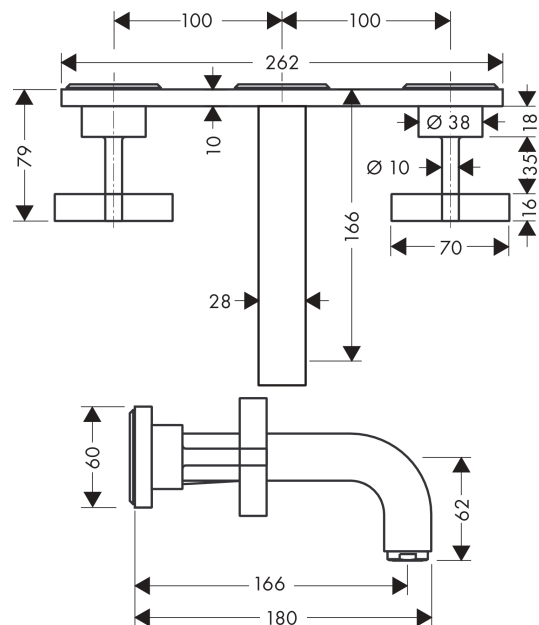
Technology



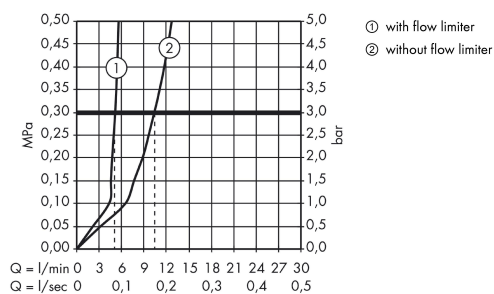
Product image



Scale drawing



Flowchart



AXOR Citterio

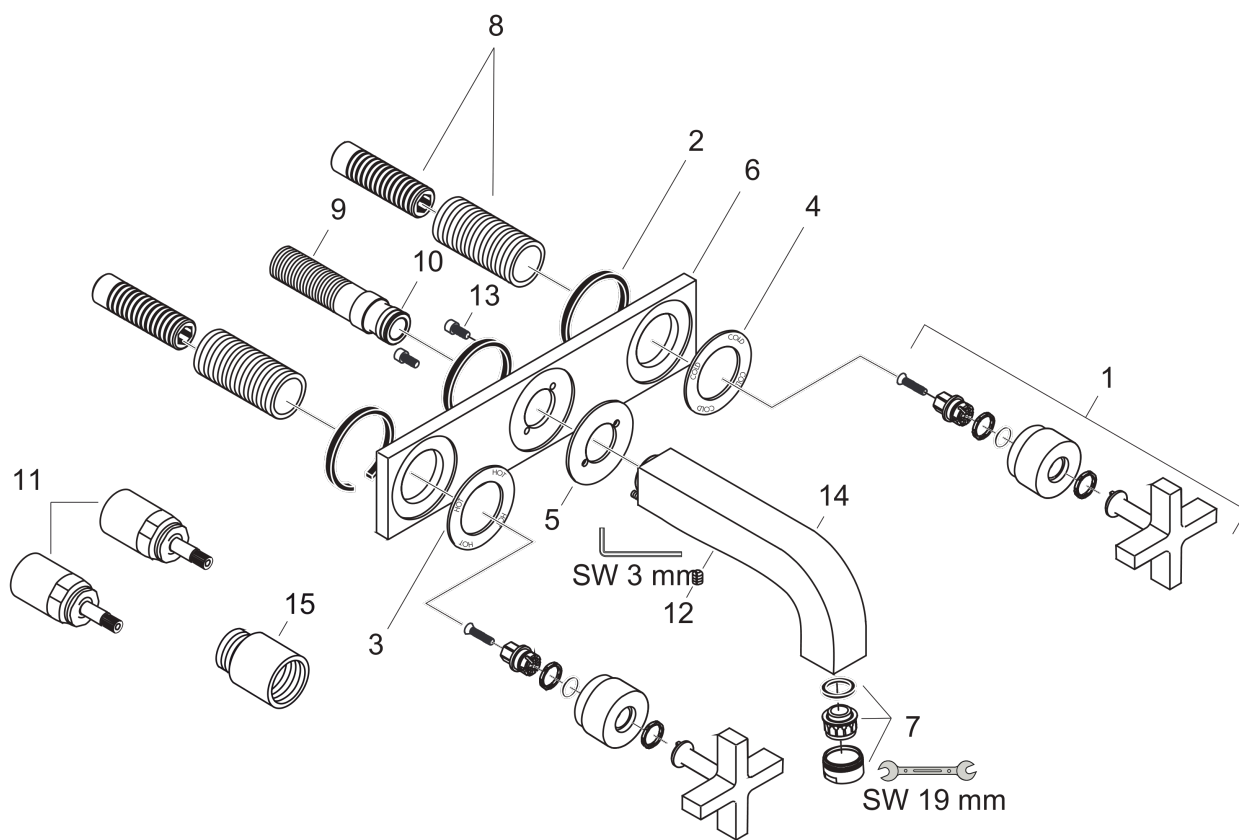
3-hole basin mixer for concealed installation wall-mounted with spout 166 mm, cross handles and plate

Surfaces: **Chrome** Article Number: **39314000**



Exploded Drawing

Year of production: **04/03 - 12/17**



AXOR Citterio

3-hole basin mixer for concealed installation wall-mounted with spout 166 mm, cross handles and plate

Surfaces: **Chrome** Article Number: **39314000**



Spare part list

Year of production: **04/03 - 12/17**

Pos.	Description	Article Number	Price	PU
1	handle	39295000	-	1
2	seal	97530000	-	1
3	escutcheon hot water	96759000	-	1
4	escutcheon cold water	96758000	-	1
5	escutcheon for spout	96760000	-	1
6	escutcheon	96757000	-	1
7	aerator M24x1 (7 l/min)	13085000	-	1
8	fixing set	96392000	-	1
9	connecting thread G½	97228000	-	1
10	O-ring 16x2,5	98134000	-	1
11	extension 25 mm	96259000	-	1
12	hollow set screw M6x6	97660000	-	1
13	hexagon socket screw M4x10	97661000	-	1
14	spout 160 mm	97238000	-	1
15	extension 25 mm	95413000	-	1
a	waste	50001000	-	1
b	base body	10303180	-	1